

B35

Shear Beam Load Cell

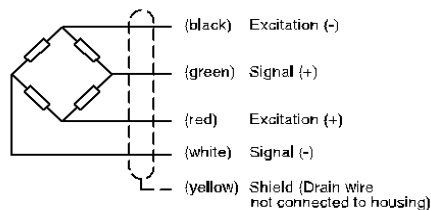
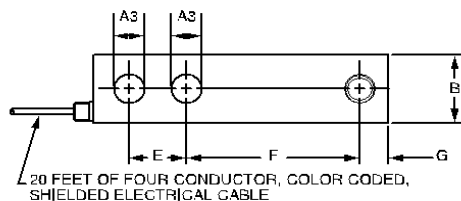
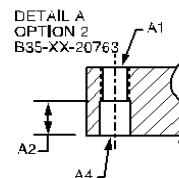
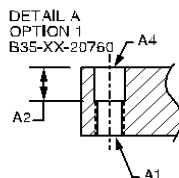
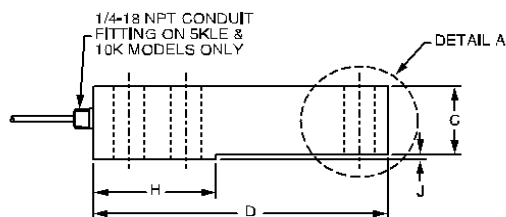


Special Features

- Capacity range from 250 to 10,000 Lbs.
- Low profile
- Extremely rugged
- High adverse load capability
- Environmentally protected
- Stainless steel construction
- FM Certified

Dimensions: inch (mm)

MAXIMUM CAPACITY (lbs)	A1	A2	A3	A4	B	C	D	E	F	G	H	J
250, 500	1/2-20 UNF-2B	0.50 (12.7)	0.53 (13.5)	0.53 (13.5)	1.21 (30.7)	0.93 (23.6)	5.12 (130.1)	1.00 (25.4)	3.00 (76.2)	0.50 (12.7)	2.86 (72.6)	0.07 (1.8)
500, 1K, 2K, 2.5K, 3K, 4K, SKSE	1/2-20 UNF-2B	0.62 (15.8)	0.53 (13.5)	0.53 (13.5)	1.21 (30.7)	1.12 (28.45)	5.12 (130.1)	1.00 (25.4)	3.00 (76.2)	0.50 (12.7)	2.86 (72.6)	0.07 (1.8)
SKLE: 10K	3/4-16 UNF-2B	0.75 (19.1)	0.78 (19.8)	0.78 (19.8)	1.44 (36.6)	1.34 (34.04)	6.75 (171.5)	1.50 (38.1)	3.75 (95.3)	0.75 (19.1)	3.75 (95.3)	0.10 (2.5)



Specifications

Model Type		B35									
Accuracy class		-	NTEP Class III								
Maximum number of load cell intervals (n_{LC})		-	5000 Divisions Multiple								
Maximum capacity (E_{max})	lb	250	500	1000	2000	2500	3000	4000	5000	10000	
Minimum load cell verification interval (V_{min})	lb	-	0.05	0.10	0.20	0.25	0.30	0.40	0.50	1.00	
Sensitivity (C_n)	mV/V	3.0 ± .01									
Zero balance		0.0 ± .060									
Temperature effect on zero balance (TK_0)		± .02									
Temperature effect on sensitivity (TK_c) ¹⁾	% of C_n / 10°C										
Temperature range +20...+40°C [+70...+105°F] -10...+20°C [+15...+70°F]											± .0175 ± .0117
Hysteresis error (d_{hy}) ¹⁾	% of C_n	± 0.02									
Non-linearity (d_{lin}) ¹⁾		± 0.02									
Creep (d_{cr}) over 30 min.		± 0.03									
Input resistance (R_{LC})	Ω	≥ 385									
Output resistance (R_O)		350 ± 1.5									
Reference excitation voltage (U_{ref})	V	5									
Maximum excitation voltage (U_{max})		15									
Insulation resistance (R_{is})	GΩ	>5									
Nominal temperature range (B_T)	°C [°F]	-10...40 [14...104]									
Service temperature range (B_{tu})		-15...70 [5...158]									
Storage temperature range (B_{tl})		-15...85 [5...185]									
Safe load limit (E_L)	% of E_{max}	150									
Ultimate load limit (E_d)		300									
Lateral load limit (E_{lq})		100									
Permissible dynamic load (F_{srel}) (vibration amplitude according to DIN 50100)		70									
Deflection at E_{max} (S_{nom}), approx.	in	0.02									
Weight, approx.	lb	2.5								5.0	
Protection class to EN60529 (IEC529)		IP67									
Material: Measuring element		Stainless Steel									
Cable Fitting Gland		Neoprene									
Cable Sheath		Polyurethane									
Coating/Plating		Electro-polished					Sand blasted				

¹⁾ The sum of data for Non-linearity, Hysteresis and Temperature effect on sensitivity meets the requirements of NTEP HB44.

